

PART OF THE NORTH 1/2 OF SEC. 24, T. 6N., R.1E., S.L.B. & M.
VALLEY LAKE ESTATES NO. 1

IN WEBER COUNTY
 SCALE 1" = 80'

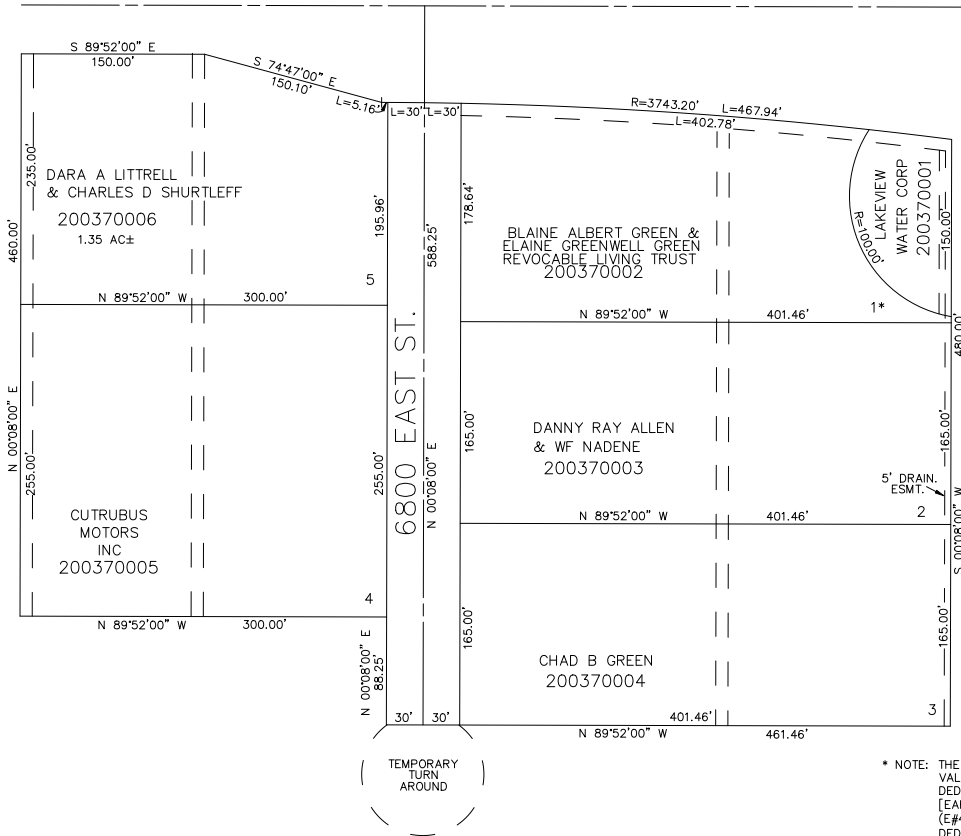
TAXING UNIT: 58

SEE PAGE 13

STATE HIGHWAY

SEE PAGE 38

SEE PAGE 36



* NOTE: THE SECTION LAND COVERED BY LOT 1 OF VALLEY-LAKE ESTATES NO. 1 HAS NOT BEEN DEDICATED AS A LEGAL LOT BECAUSE THEY [EARL A JONES & WF ALENE H JONES (E#431943 BK 781 PG 249)] DID NOT SIGN THE DEDICATION PLAT AT THE TIME OF RECORDING. DEDICATOR DID NOT HAVE TITLE TO THE LAND, NOR HAVE EASEMENTS IN SAID LOT 1 GRANTED.

ALSO NOTE: LOT 1 ASSESSED AS SECTION LAND.

FOR COMPLETE ENG DATA SEE ORIGINAL DEDICATION PLAT IN BOOK 13, PAGE 99 OF RECORDS.

SEE PAGE 38

10' UTILITY & DRAINAGE EASEMENTS EACH SIDE OF PROPERTY LINES AS INDICATED BY DASHED LINES EXCEPT AS OTHERWISE SHOWN.